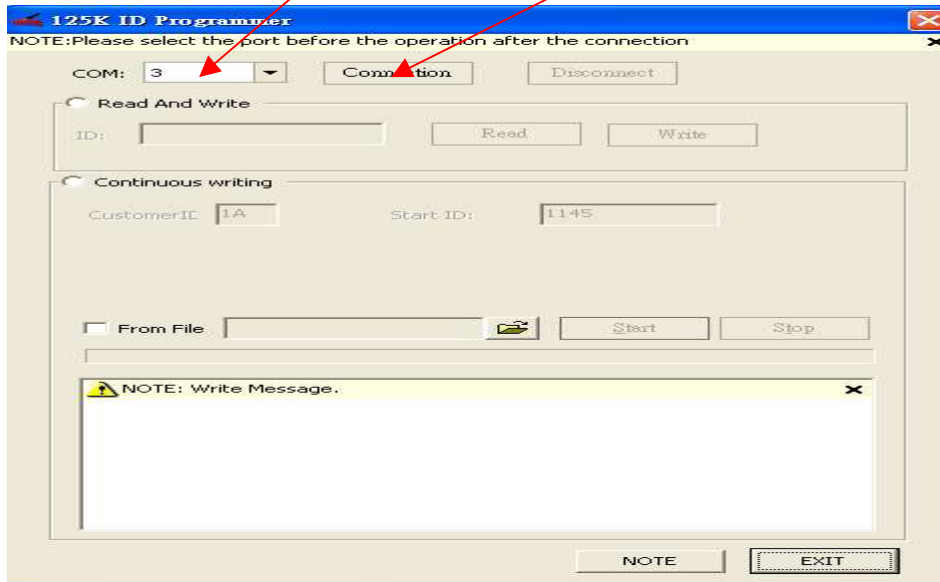


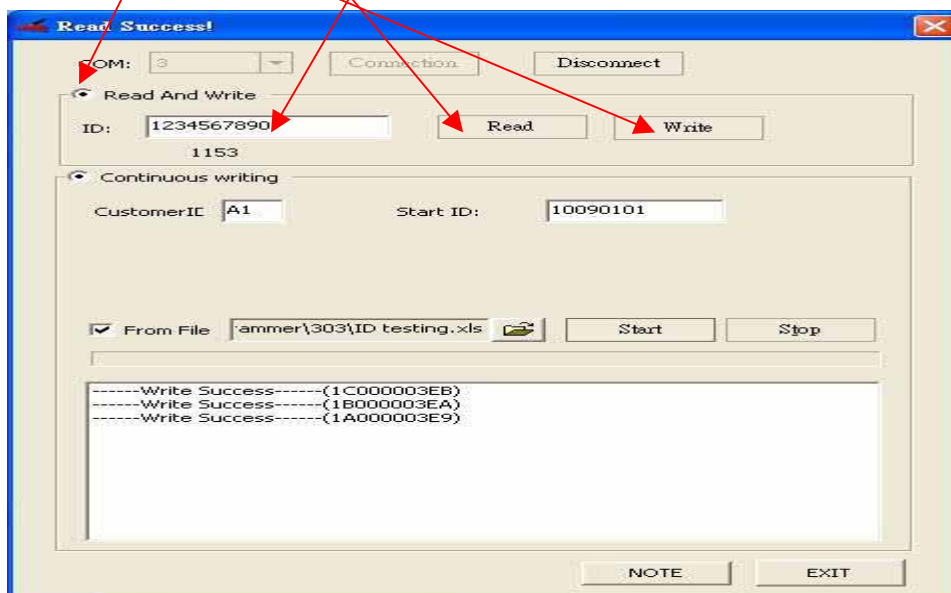
125K EM4100 ID programmer user guide

- [1] run the program from the path : \ID programmer\ID programmer.exe
- [2] select the correct "com port" and click on "connect"



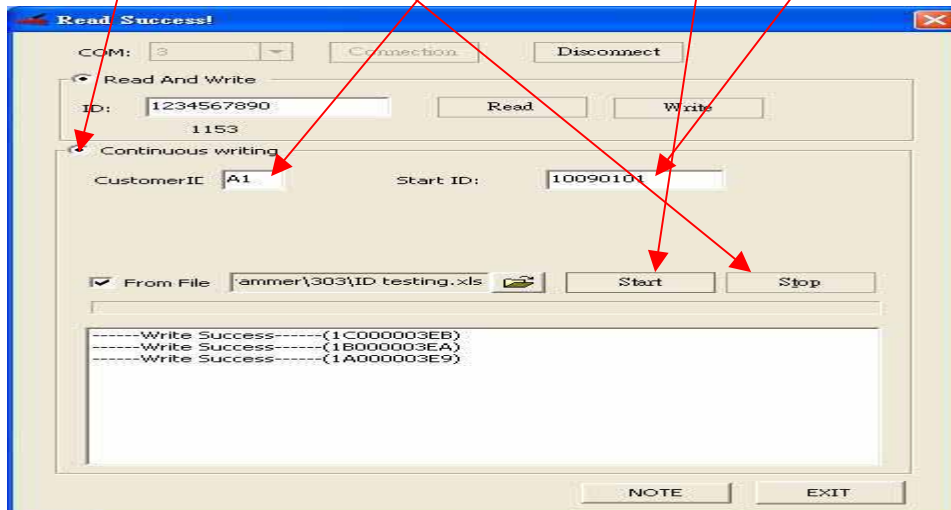
How to duplicate a EM4100 or compatible card

- [1] select "Read and Write" and place the original EM4100 card on the reader
- [2] click on "Read" and card's ID will be shown here
- [3] take away the original EM4100 card and put a "T5567" card on the reader
- [4] click on "Write" and "Write success" message will show if write success



How to program the continuous ID and customer ID card

- [1] tick "Continuous writing" and input customer ID (2 digit) and Start ID (8 digit)
- [2] put a "T5567" card on the reader and click on " Start"
- [3] if write success , start ID will increase one automatically
- [4] put another T5567 card on the reader
- [5] if finished , click on "Stop"



How to program the customer make ID

- [1] created a worksheet with your own customer ID and card ID. (refer to \ID testing.xls)
- [2] tick "Continuous writing" & "From File" to select the excel worksheet file
- [3] put a T5567 card on the reader and click on " Start"
- [4] programmer will start to program the card according to the worksheet data
- [5] if write success , put another T5567 card on the reader
- [6] repeat the step 5
- [7] programmer will stop automatically when at the end of the worksheet

